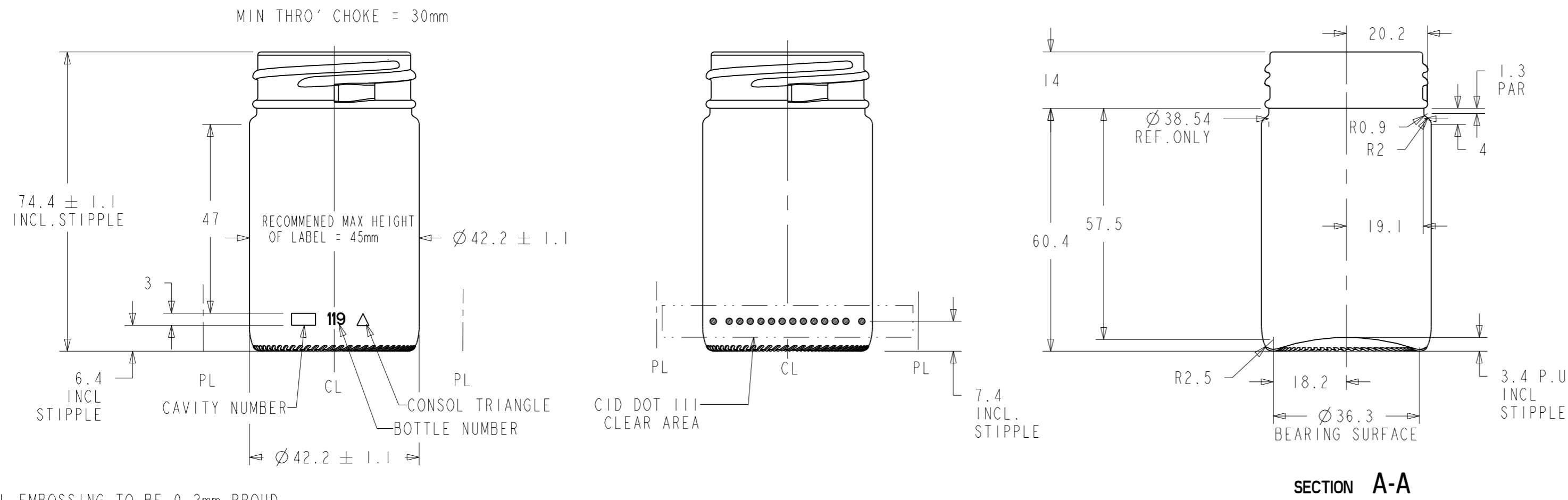
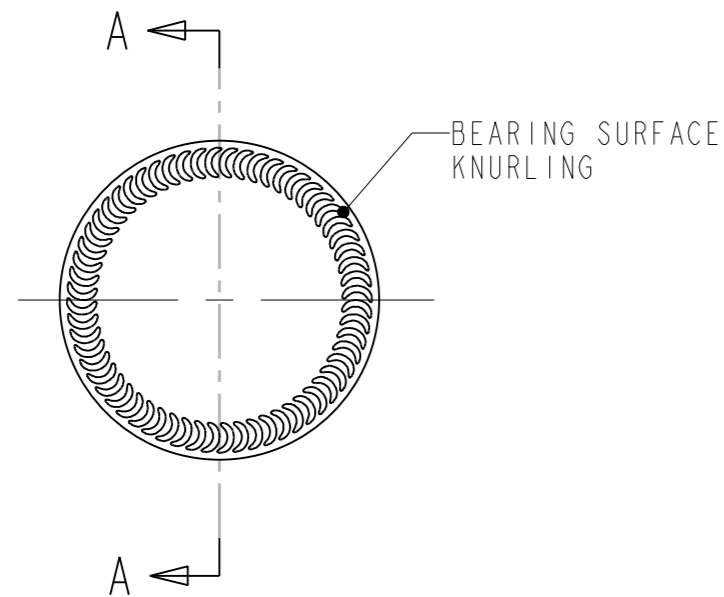


STIPULATED USE	FINISH No.1	MAX. VERTICAL LOAD 100 Kg	MAX. CARBONATION NIL VOLS	MAX. THERMAL SHOCK 50 °C	NON RETURNABLE
----------------	-------------	---------------------------	---------------------------	--------------------------	----------------

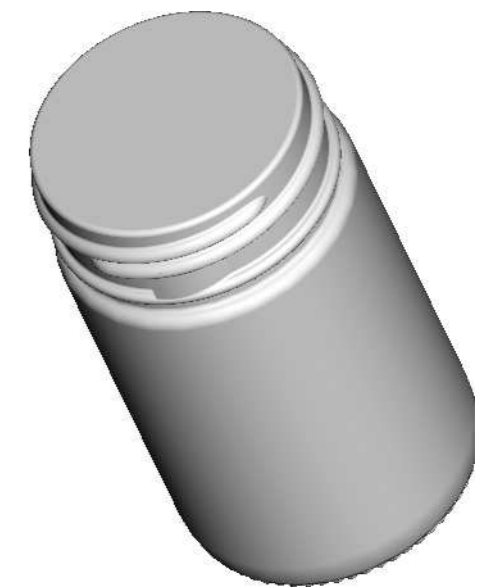
THIS BW WILL BE USED FOR PRESS BLOW PROCESS ONLY



HEEL EMBOSING TO BE 0.2mm PROUD



FINISH NUMBER	1	
MIN PRESSURE INDV	N/A	KPA
OVALITY BODY	1.7	MAX
OVALITY FINISH	0.8	MAX
OFF PLUMB	2.0	MAX
COCKED FINISH	0.7	MAX
WARPED FINISH	0.3	MAX
BENT NECK	N/A	MAX
BULGED PANEL	N/A	MAX
SUNKEN PANEL	N/A	MAX
SIDEWALL THICKNESS SHOULDER CONTACT	0.9	MIN
SIDEWALL THICKNESS MID BODY	0.9	MIN
SIDEWALL THICKNESS HEEL CONTACT	0.9	MIN
BEARING SURFACE	1.8	MIN
PUSH UP THICKNESS	1.8	MIN



DRAWING APPROVAL				THIS DATA IS BASED ON MEAN DIMENSIONS AND CAN VARY WITHIN SPECIFICATION RANGE DATA TO BE USED AS A DESIGN GUIDELINE	01	FINISH WAS CB05204102	28/02/2012	A.P	BW10038	FINISH	MASS (g)	CAPACITY (ml)	FILL POINT INSIDE (mm)			
NAME	DESIGNATION	SIGNATURE	DATE							TWO START (D-RAMP) GLOBAL GRINDER CB05204103	± 5.0	65 ± 1.9	BF			
				PERCENTAGE VACUITY		BF	CONVERT TO BW STATUS	21/02/12	R.B	T2673H						
				CENTER OF GRAVITY		30.4mm UP FROM BASE	REVISIONS	DATE	CH'D	REFERENCES						
				TILT ANGLE		30.8°	III	MASS / CAPACITY RATIO	1.23	NPD: ALT 7582011						
				STABILITY RATIO		0.49	CBF: 65.0	DRAWN: A.P	DATE: 16/5/11	CHECKED:	T	2673H	BW	10038/01	BN	119

Consol.

TITLE: 65ml GLOBAL GRINDER

CUSTOMER: GLOBAL GRINDERS